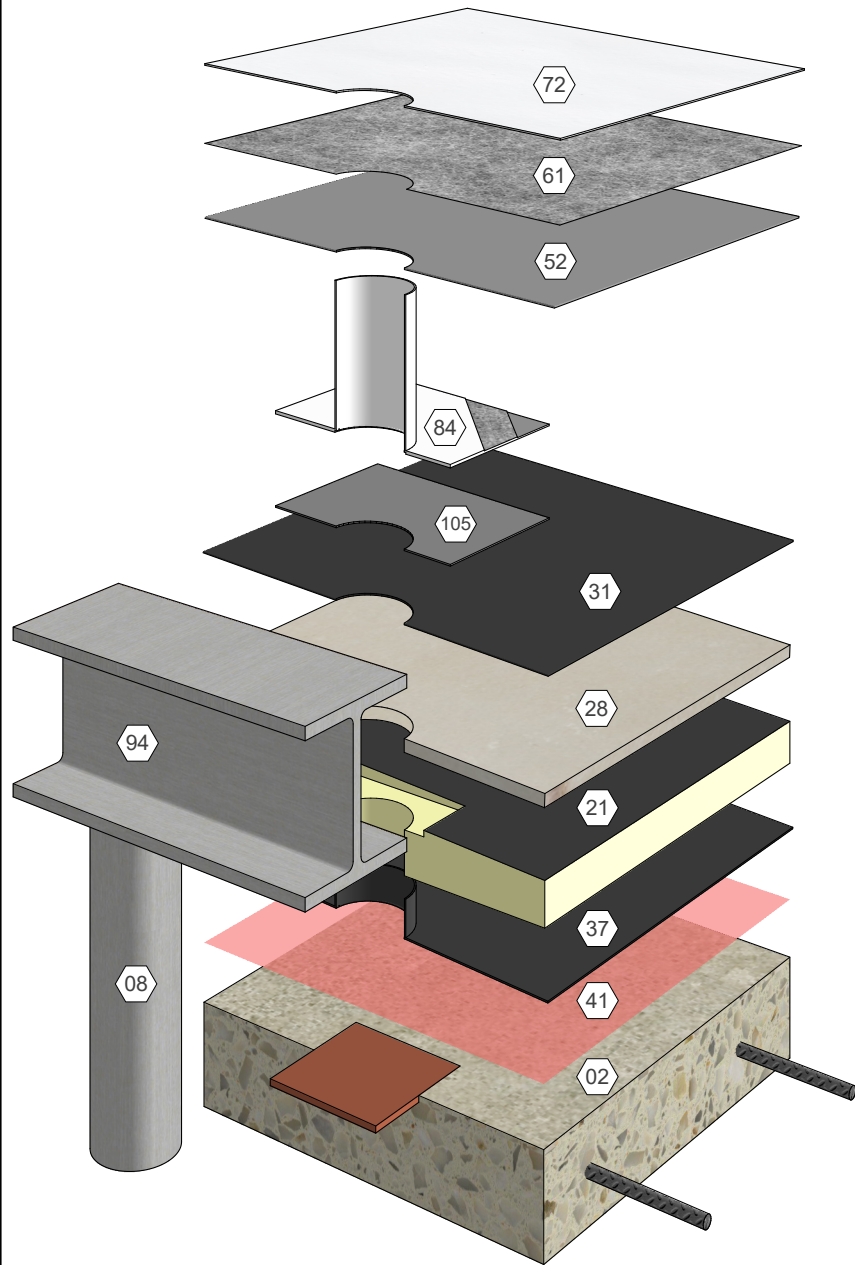
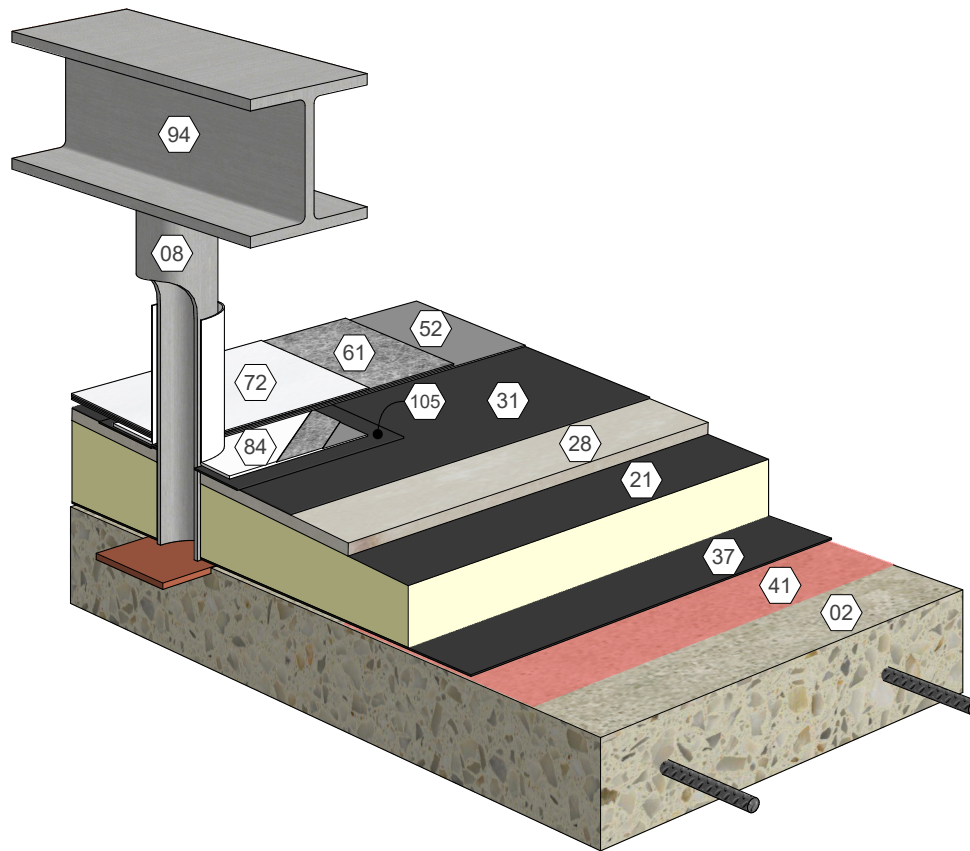


AlphaGuard® BIO Plus Equipment Support Stand Leg, Temp. Roof, Metal Deck
 Detail 33111

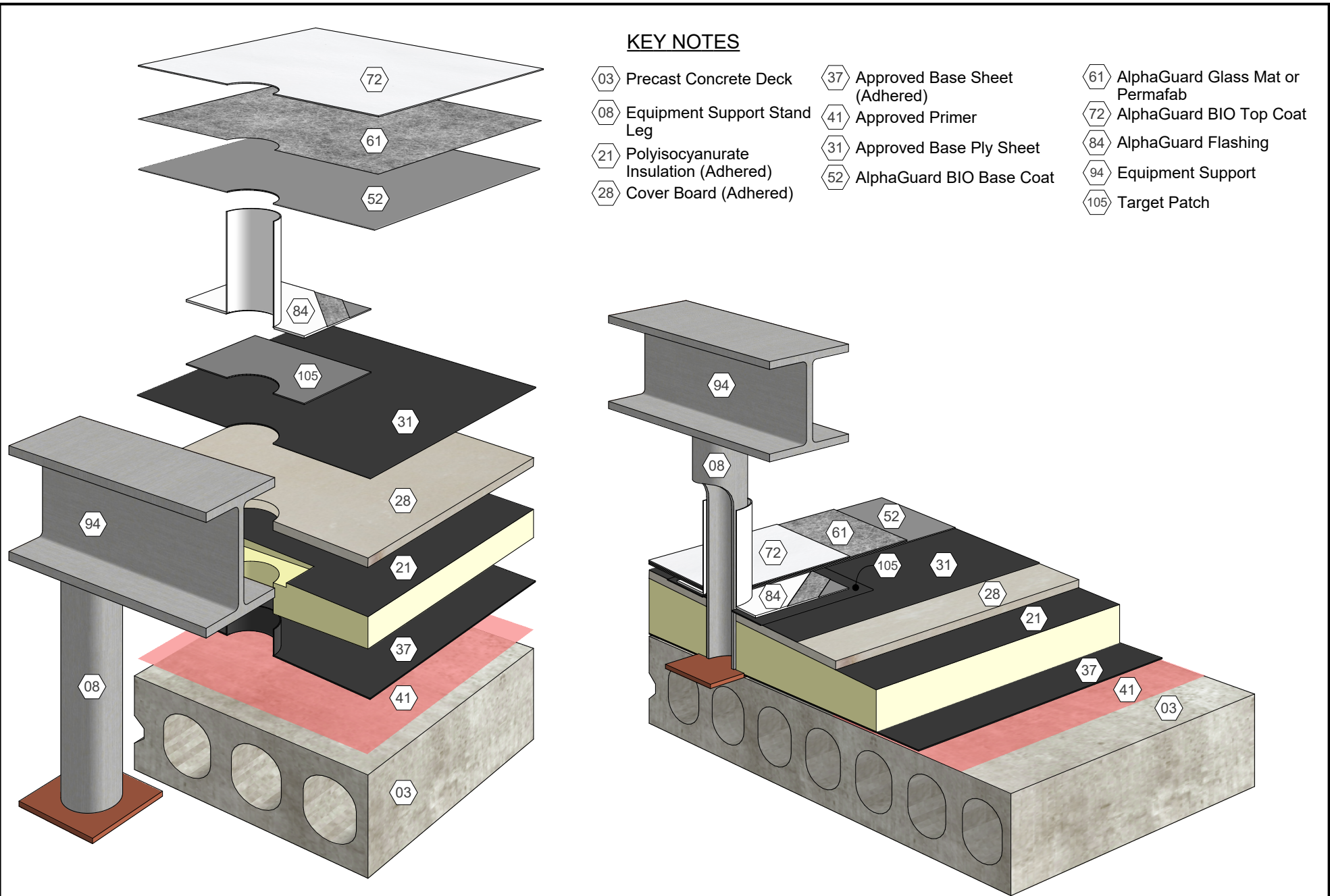


KEY NOTES

- | | | |
|------------------------------------------|----------------------------------|-------------------------------------|
| 02 Structural Concrete Deck | 31 Approved Base Ply Sheet | 61 AlphaGuard Glass Mat or Permafab |
| 08 Equipment Support Stand Leg | 37 Approved Base Sheet (Adhered) | 72 AlphaGuard BIO Top Coat |
| 21 Polyisocyanurate Insulation (Adhered) | 41 Approved Primer | 84 AlphaGuard Flashing |
| 28 Cover Board (Adhered) | 52 AlphaGuard BIO Base Coat | 94 Equipment Support |
| | | 105 Target Patch |



AlphaGuard® BIO Plus Equipment Support Stand Leg, Temp. Roof, Structural Concrete Deck
Detail 33112

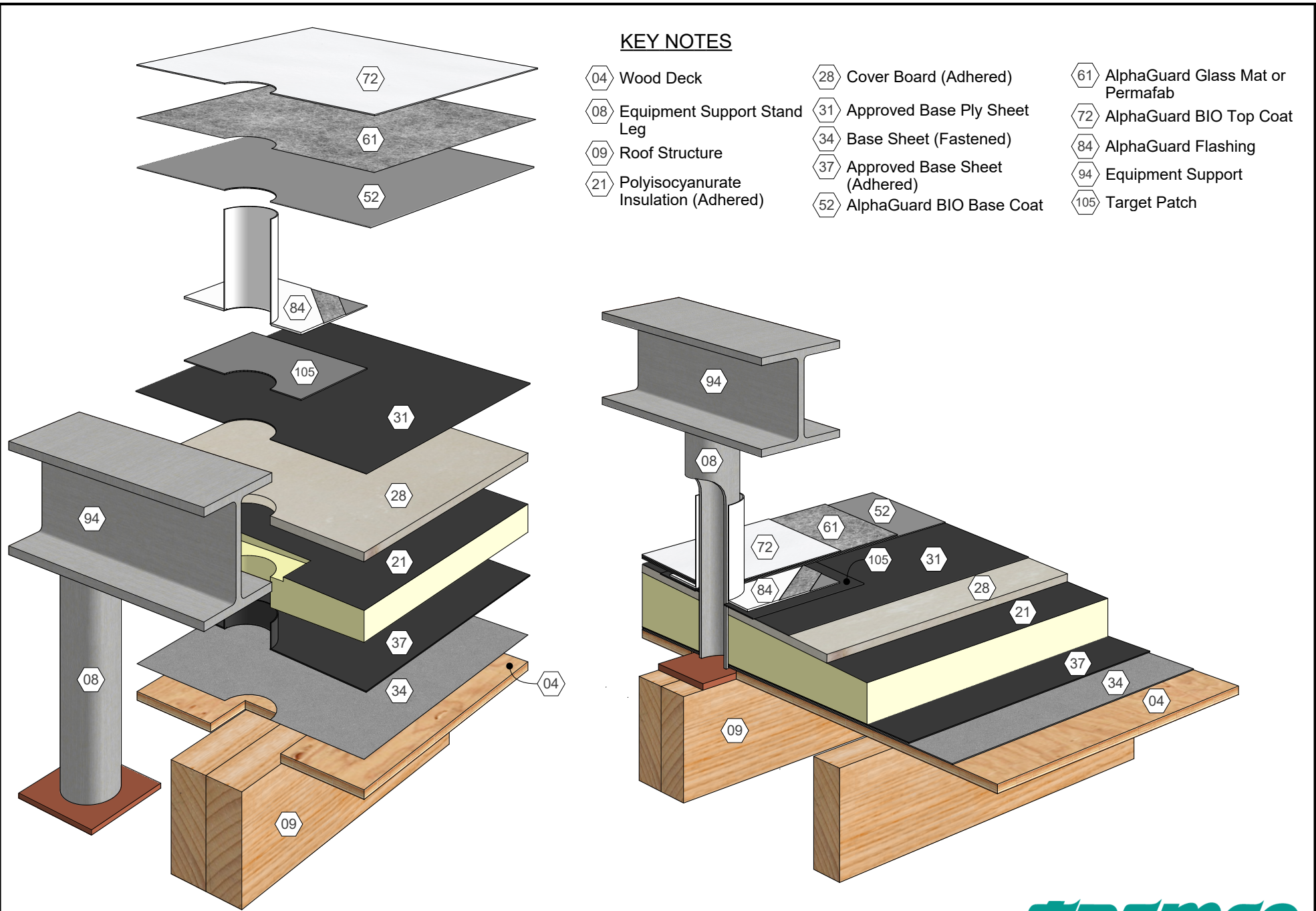


KEY NOTES

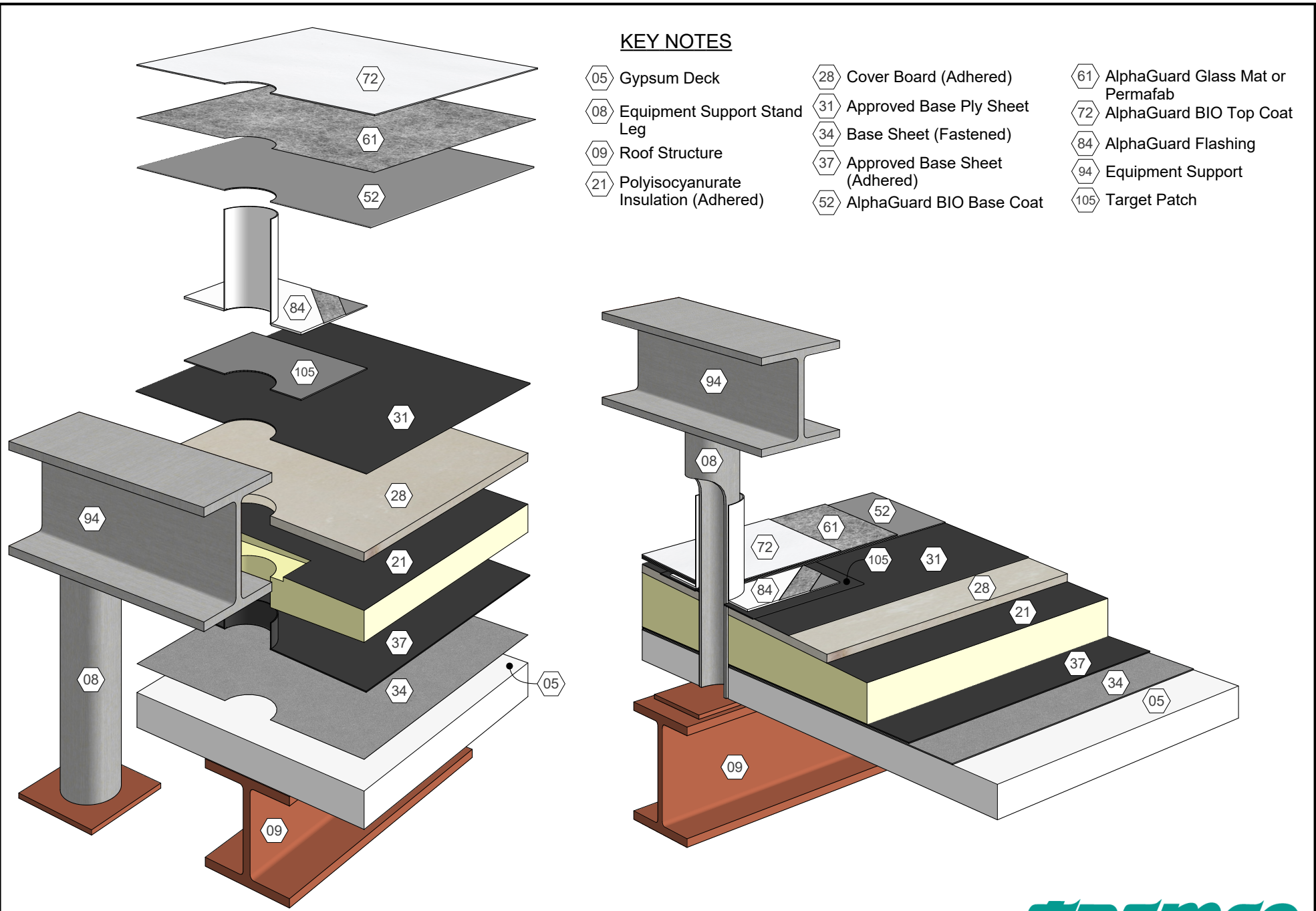
- 03 Precast Concrete Deck
- 08 Equipment Support Stand Leg
- 21 Polyisocyanurate Insulation (Adhered)
- 28 Cover Board (Adhered)
- 37 Approved Base Sheet (Adhered)
- 41 Approved Primer
- 31 Approved Base Ply Sheet
- 52 AlphaGuard BIO Base Coat
- 61 AlphaGuard Glass Mat or Permafab
- 72 AlphaGuard BIO Top Coat
- 84 AlphaGuard Flashing
- 94 Equipment Support
- 105 Target Patch

AlphaGuard® BIO Plus Equipment Support Stand Leg, Temp. Roof, Precast Concrete Deck
 Detail 33113





AlphaGuard® BIO Plus Equipment Support Stand Leg, Temp. Roof, Wood Deck
 Detail 33114



AlphaGuard® BIO Plus Equipment Support Stand Leg, Temp. Roof, Gypsum Deck
 Detail 33115